

# Connect Four!

## Game Board

11	$24^\circ$	\$60	25
i	AB//CD	South	c
Alif	Acute	112	Obtuse
$31^\circ$	b	ii	110

# Connect Four!

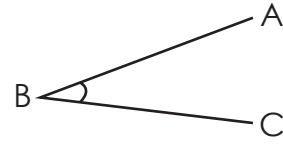
## Game Board

66.42	South-east	AB//CD	b
East	118	d	North
Obtuse	a	Ahmad	$30^\circ$
\$56	28	\$40	Acute

# Connect Four!

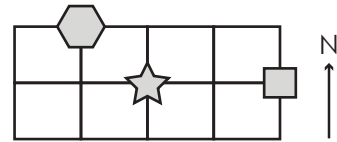
## Game Board

Alif jogged 4 km. Ahmad ran  $\frac{4}{5}$  km. Who ran at a longer distance?



$\angle ABC$  is an \_\_\_\_\_ angle.

$\frac{2}{9}$  of 540



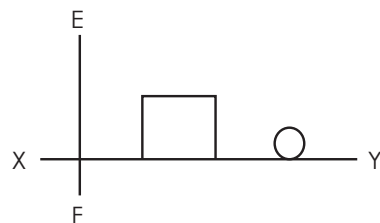
The star is \_\_\_\_\_ of the polygon.

A baker baked 99 cupcakes. She sold  $\frac{8}{9}$  of it. How many cupcakes were left?

Which of the following letters has two horizontal lines?

- (a) L                      (b) Z  
(c) H                      (d) M

Syah spent  $\frac{7}{10}$  of his money on food. He had \$24 left. How much money did he have at first?

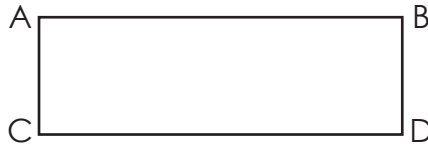


There are \_\_\_\_\_ vertical lines in the diagram.

# Connect Four!

## Game Board

List the two pairs of parallel lines in the rectangle ABCD.

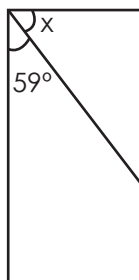


In a rectangle, the breadth is  $\frac{5}{8}$  of the length. If the length is 40 cm, find the breadth.

Which property do both of the shapes have?



- (i) All angles are right angles.
- (ii) Two right angles.
- (iii) One pair of parallel sides.
- (iv) All sides are equal.



Find x.